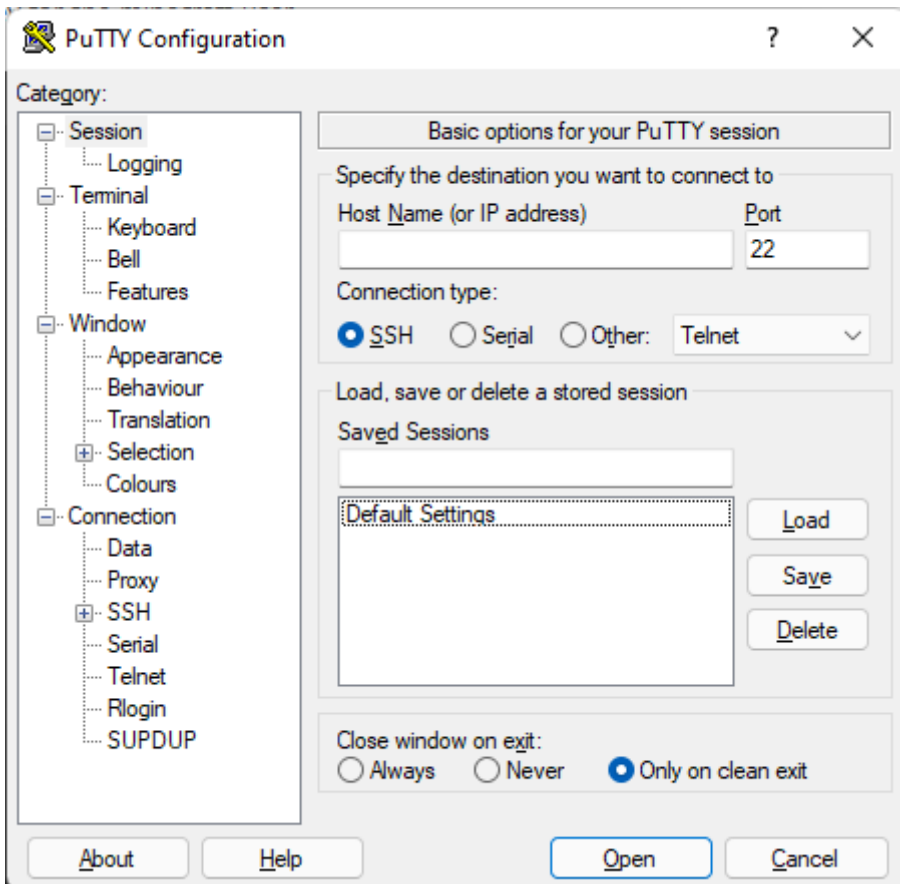


PuTTY (>=0.78) SSH Guide

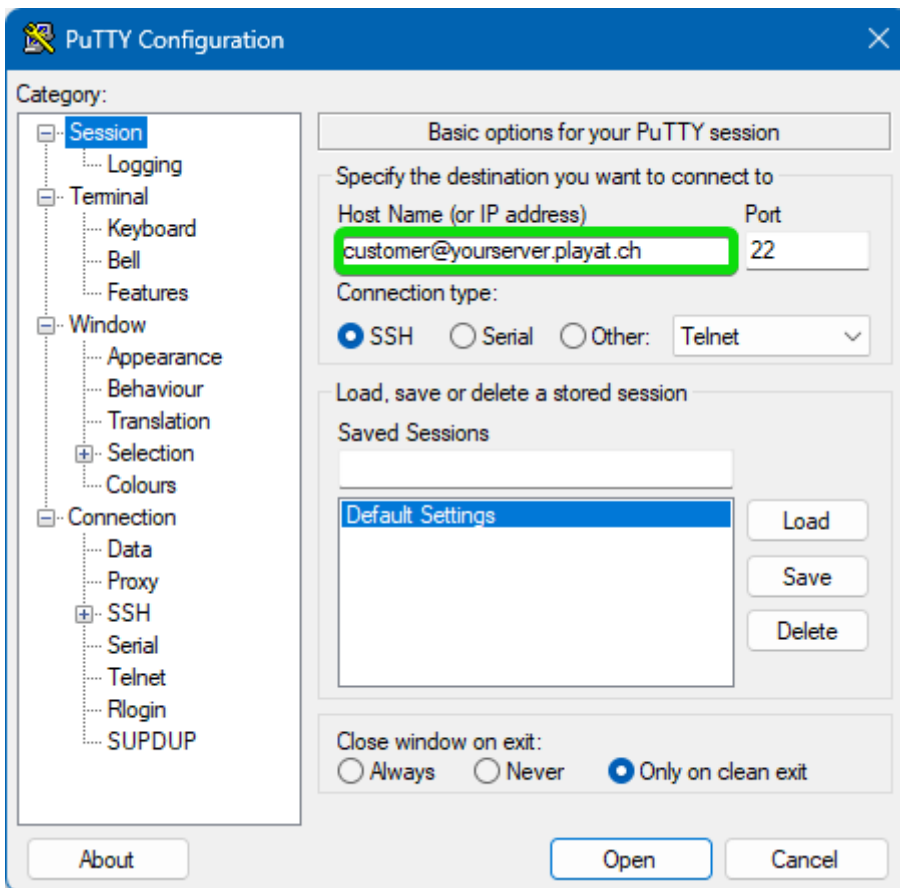
Putty is a piece of software that can be used to connect to your server using SSH and can be downloaded at the following link

<https://www.chiark.greenend.org.uk/~sgtatham/putty/latest.html>

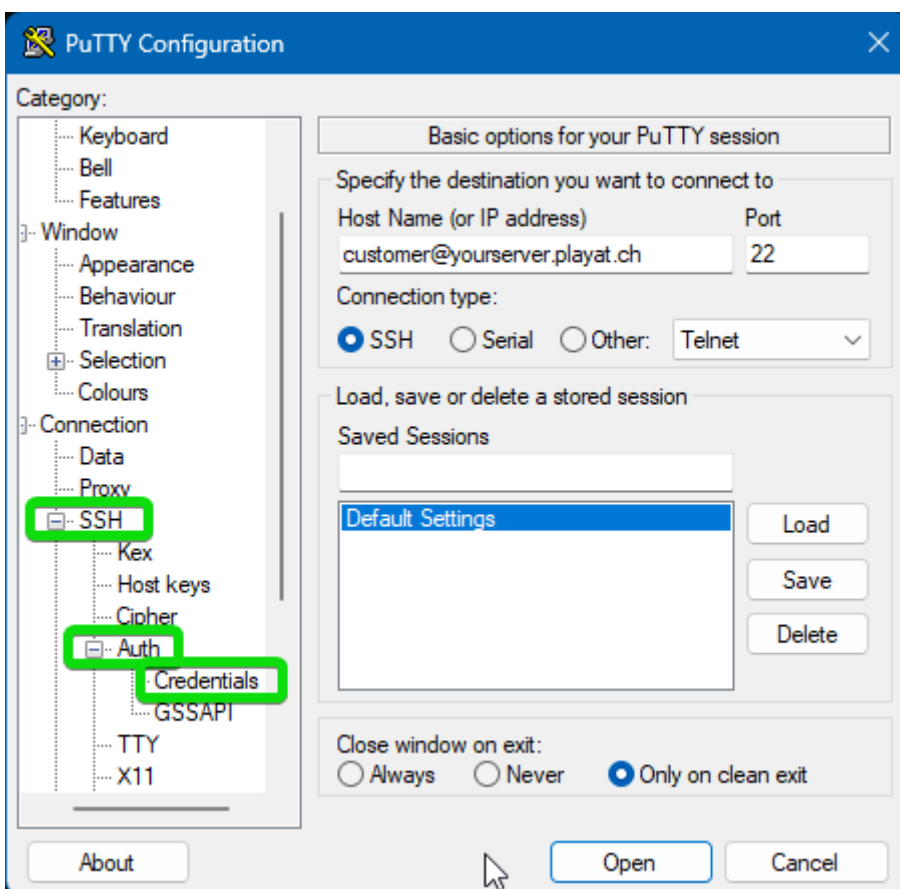
Once you have putty downloaded, open it and you will be greeted with the following screen.



Now enter customer@YOURSERVERNAME.plyat.ch into the Host Name box

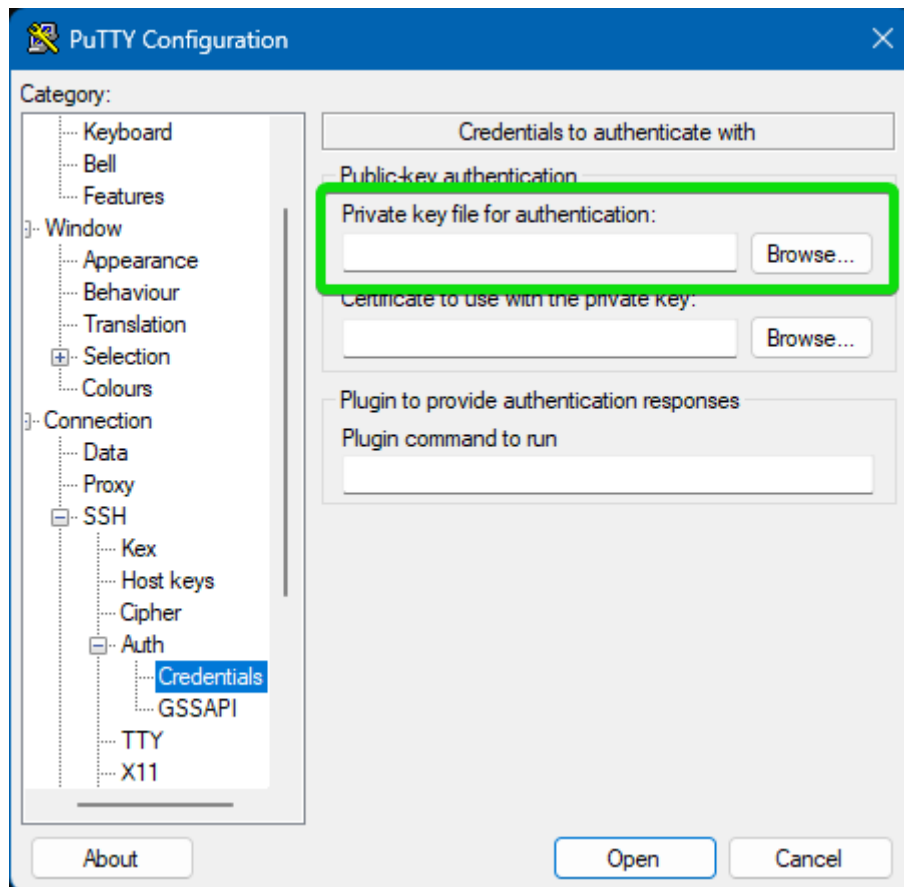


Next you will need to click on the + next to SSH and then Auth then click on Credentials



You will now be on a screen where you can select a Private key file, this is the PPK file that you generated or uploaded to the CreeperPanel, to select the file click on the Browse button then navigate and select the ppk file.

After selecting the key file, click on the Open button to connect via SSH



Revision #4

Created 31 October 2022 20:21:25 by Gareth W

Updated 11 January 2024 00:18:12 by Gareth W